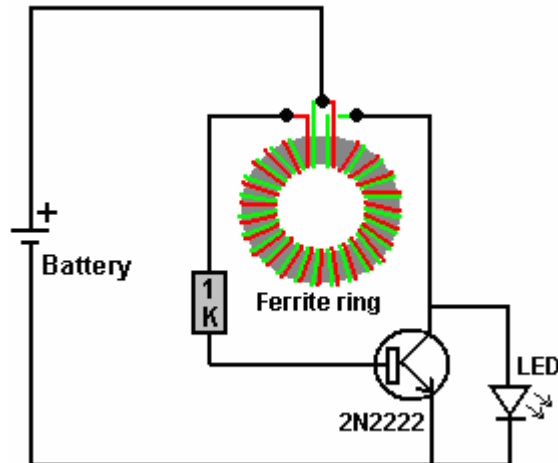


## THE "FLEET" CIRCUIT FROM LAWRENCE TSEUNG

IN 1999, THE MAGAZINE "EVERYDAY PRACTICAL ELECTRONICS" PUBLISHED THE "JOULE THIEF" CIRCUIT OF MR. Z. KAPARNIK. THAT CIRCUIT HAS RESULTED IN A MASSIVE AMOUNT OF INTEREST AND A VERY LARGE AMOUNT OF FURTHER EXPERIMENTATION BY PEOPLE ALL AROUND THE WORLD.

THE JOULE THIEF CIRCUIT WAS INTENDED TO LIGHT A LIGHT-EMITTING DIODE WITH A "DEAD" DRY-CELL BATTERY WHICH HAD BEEN DISCARDED. THE CIRCUIT IS REMARKABLY SIMPLE AND VERY EFFECTIVE :

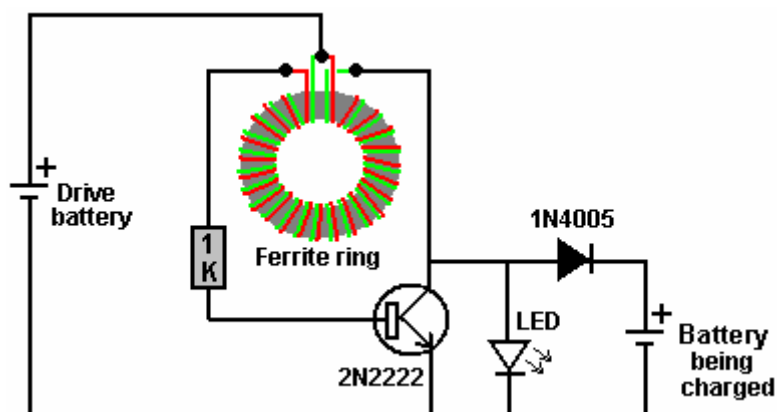


THE ACTIVE COMPONENT IS A TINY FERRITE RING OR 'TOROID' WHICH HAS BEEN WOUND WITH TWO SHORT LENGTHS OF ENAMELLED COPPER WIRE SIDE-BY-SIDE (AS ADVOCATED BY NIKOLA TESLA). NORMALLY ONLY ELEVEN TURNS OF THE PAIR OF WIRES ARE USED.

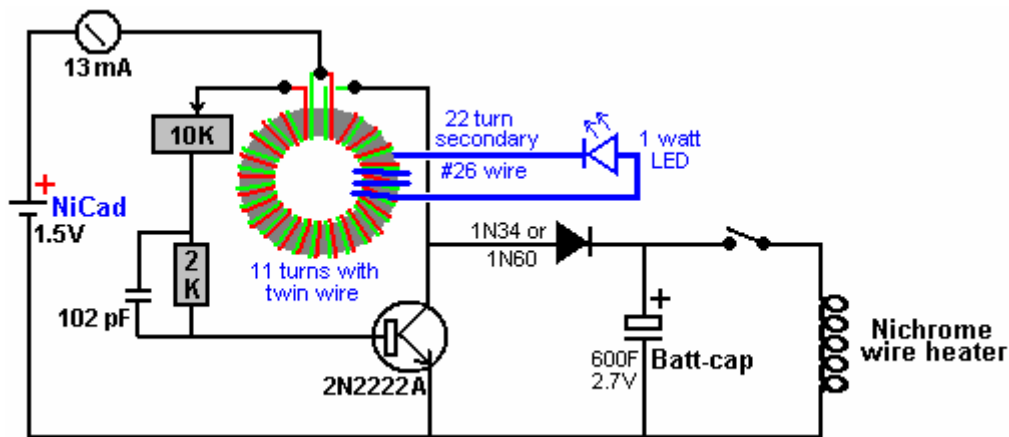
WHEN THE CIRCUIT IS POWERED UP BY CONNECTING THE "DEAD" BATTERY, THE INITIAL CURRENT PULSE GENERATES A HIGHER VOLTAGE IN THE WINDINGS ON THE FERRITE RING AND STARTS THE CIRCUIT OSCILLATING. THE OSCILLATIONS PRODUCE SHORT VOLTAGE PEAKS WHICH ARE HIGH ENOUGH TO LIGHT THE LED IN SPITE OF THE BATTERY VOLTAGE BEING FAR TOO LOW TO LIGHT THE LED DIRECTLY.

THE CIRCUIT WORKS WELL WITH A 1.5-VOLT BATTERY WHICH HAS ONLY 0.4 VOLTS REMAINING IN IT. THE TOROID IS WOUND WITH JUST ELEVEN PAIRS OF TURNS ON IT, BUT THE CIRCUIT HAS ONE MISTAKE IN IT, IN THAT THE OUTPUT TO THE LED IS TAKEN FROM THE COLLECTOR OF THE TRANSISTOR, AND THAT INCREASES THE CURRENT DRAWN FROM THE BATTERY.

THE CIRCUIT WAS ADAPTED BY BILL SHERMAN SO THAT IT CHARGED A BATTERY AS WELL AS LIGHTING THE LED. THIS WAS DONE BY ADDING JUST ONE DIODE :



“GADGETMALL” OF THE [www.overunity.com](http://www.overunity.com) JOULE THIEF FORUM HAS TAKEN THE CIRCUIT FURTHER AND FOUND A VERY INTERESTING SITUATION. HE HAS MODIFIED THE CIRCUIT AND USED A “BATT- CAP” WHICH IS A VERY HIGH CAPACITY, LOW LOSS CAPACITOR INSTEAD OF A BATTERY BEING CHARGED. HE ALSO WINDS A SECOND 22-TURN COIL ON TOP OF THE TOROID WINDINGS AND HE LIGHTS A 1-WATT LED FROM THAT WINDING. THIS IS HIS CIRCUIT WHICH DRAWS 13 MILLIAMPS OF CURRENT FROM THE BATTERY FOR FOURTEEN HOURS :



THE EXCEPTIONALLY INTERESTING THING ABOUT HIS CIRCUIT IS THAT THE BATT-CAP GAINS SO MUCH POWER IN THAT PERIOD THAT IT CAN RECHARGE THE 1.5 VOLT Ni-Cad BATTERY, EFFECTIVELY MAKING THE CIRCUIT SELF-SUSTAINING. EVEN AFTER RECHARGING THE Ni-Cad BATTERY, THERE IS SUBSTANTIAL POWER LEFT IN THE BATT-CAP.

THE EFFICIENCY OF THIS JOULE THIEF CIRCUIT HAS BEEN INVESTIGATED BY JENNA IN HER VERY INTERESTING VIDEOS :

<http://www.youtube.com/watch?v=Y4IMqDRGpHE>

<http://www.youtube.com/watch?v=1tVICJiuWH4>

<http://www.youtube.com/watch?v=y6pbzrhBR-8>

<http://www.youtube.com/watch?v=tNoZrV3w4f8>

<http://www.youtube.com/watch?v=XzhbsLBwc54>

<http://www.youtube.com/watch?v=4gj7IFCXw9Q>

LAWRENCE TSEUNG ALONG WITH A TEAM OF OTHER PEOPLE HAS MODIFIED THE JOULE THIEF CIRCUIT SO THAT IT HAS A SERIOUS OUTPUT. HE ASSESSES THE CIRCUIT PERFORMANCE AS BEING COP=10, THAT IS, TEN TIMES MORE POWER COMING OUT OF THE CIRCUIT THAN YOU HAVE TO PUT INTO THE CIRCUIT TO MAKE IT WORK.

THE TOROID HAS BEEN ENLARGED TO A MUCH GREATER DIAMETER AND FERRITE HAS BEEN REPLACED WITH JUST A PLASTIC RING, SAY, 170mm DIAMETER AND 45mm DEEP :



**THIS SECTION OF PIPE IS “BI-FILAR” WOUND WITH TWO WIRES SIDE-BY-SIDE. WHEN THE WINDING HAS BEEN COMPLETED ALL THE WAY AROUND THE PLASTIC RING, THEN THE START OF ONE WIRE IS CONNECTED TO THE END OF THE OTHER WIRE. THEN, THE WINDING IS COVERED WITH A LAYER OF ELECTRICAL TAPE TO HOLD IT IN PLACE AND TO PROVIDE AN EASY WORKING SURFACE FOR THE NEXT WINDING.**

**THE WIRE USED FOR THE WINDING IS A MULTI-STRAND “FIGURE OF EIGHT” TYPE CAPABLE OF CARRYING 2.5 AMPS OF CURRENT. IT MUST BE SIDE-BY-SIDE WIRE AND NOT ONE OF THE TWISTED VARIETIES. IT LOOKS LIKE THIS :**



**IF YOU CAN’T GET THIS FIGURE-OF-EIGHT WIRE WITH THE TWO WIRES CONNECTED LIKE THE PHOTOGRAPH ABOVE, THEN IT IS OKAY TO USE TWO SEPARATE MULTI-STRAND WIRES AND WIND THEM CAREFULLY SIDE BY SIDE – HAVING DIFFERENT COLOURS IS CONVENIENT.**

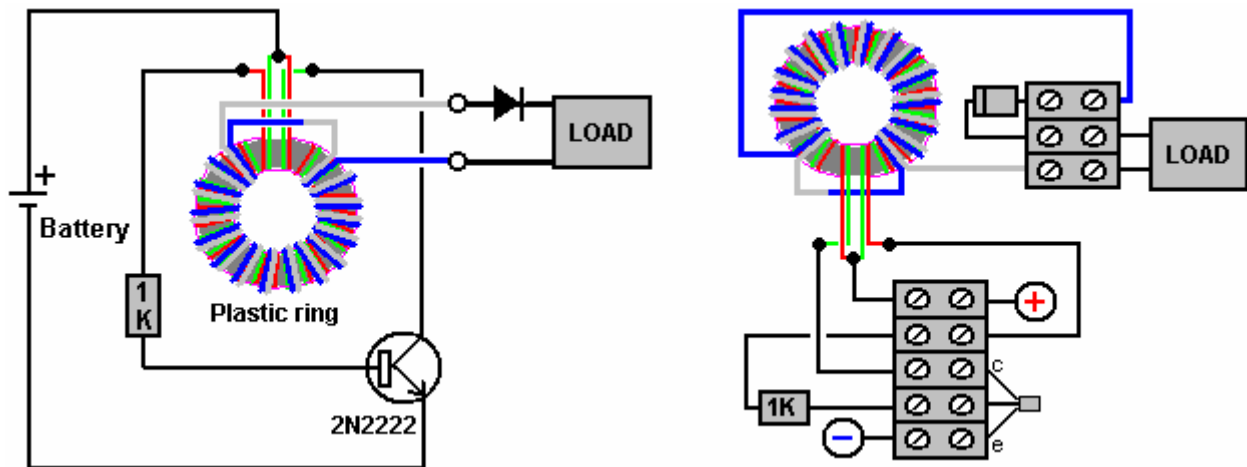
**THE SECOND WINDING IS MADE IN THE SAME WAY AND THE END OF ONE WIRE CONNECTED TO THE START OF THE SECOND WIRE, AND FOR THIS WINDING, THAT JOINT BETWEEN THE TWO WIRES IS INSULATED AS IT IS NOT CONNECTED TO ANYTHING ELSE. THE COIL MIGHT END UP LOOKING LIKE THIS :**



**THE INNER COIL IS CONNECTED AS A JOULE THIEF CIRCUIT AND IT OSCILLATES CONTINUOUSLY, CAUSING AN OSCILLATING MAGNETIC FIELD TO ENVELOPE THE SECOND WINDING. THE REALLY IMPORTANT THING ABOUT THIS ARRANGEMENT IS THE FACT THAT THE AMOUNT OF POWER COMING OUT OF THE CIRCUIT IS VERY MUCH GREATER THAN THE AMOUNT OF POWER NEEDED TO MAKE THE CIRCUIT OPERATE. LAWRENCE TSEUNG DESCRIBES THIS EXTRA POWER AS BEING “LED OUT” OF THE ENVIRONMENT AND HIS THEORY FOR THIS IS KNOWN AS THE “LEAD-OUT THEORY”. CONSEQUENTLY, THE CIRCUIT**

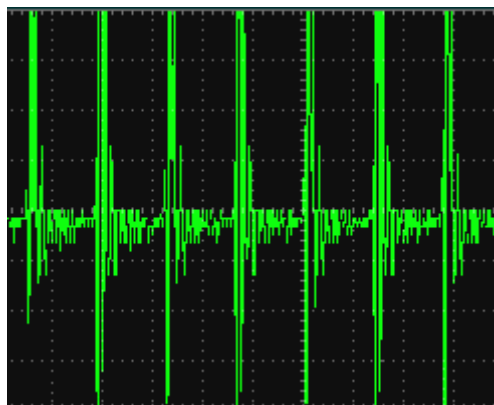
IS CALLED THE F.L.E.E.T. DEVICE WHERE F.L.E.E.T. STANDS FOR THE “FOREVER LEAD-OUT EXISTING ENERGY TRANSFORMER” EMPHASISING THAT THE EXTRA ENERGY HAS NOT BEEN CREATED BUT INSTEAD HAS JUST BEEN DRAWN INTO THE CIRCUIT FROM THE ENVIRONMENT WHERE IT ALREADY EXISTED.

THE OVERALL CIRCUIT LOOKS LIKE THIS :

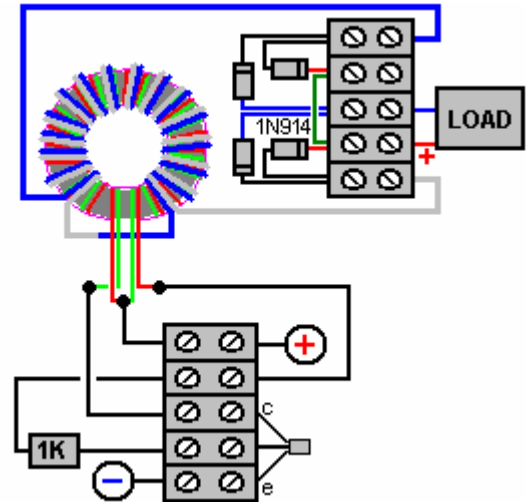
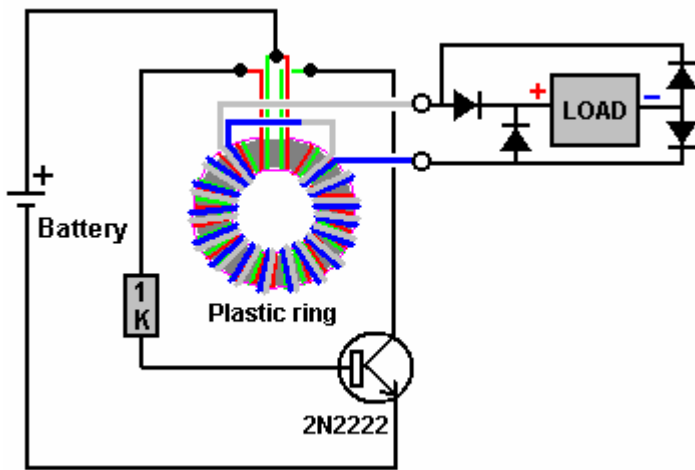


WHILE THE OUTER WINDING IS SHOWN HERE WITH THICKER WIRE OF A DIFFERENT COLOUR, THIS IS ONLY TO MAKE THE DRAWING EASIER TO UNDERSTAND. IN REALITY, THE OUTER WINDING IS MADE WITH EXACTLY THE SAME WIRE AS THE INNER WINDING, AND BOTH WINDINGS GO ALL OF THE WAY AROUND THE TOROID. THE TOTAL AMOUNT OF WIRE NEEDED TO MAKE THE WINDINGS IS ABOUT 70 METRES AND SO IT IS NORMAL TO BUY A 100-METRE REEL OF THE TWIN-CORE WIRE AS THAT IS ENOUGH TO MAKE BOTH WINDINGS AND STILL HAVE SOME OVER FOR OTHER THINGS.

FOR TECHNICALLY MINDED PEOPLE, THE OUTPUT WAVEFORM LOOKS LIKE THIS :



AND THERE ARE ABOUT 290,000 OF THOSE PULSES PER SECOND. AT AN EARLY STAGE, I DECIDED TO CONFIRM THAT FREE ENERGY EXISTED, AND SO I BUILT A FLEET CIRCUIT IN AN EVENING. I DECIDED TO USE TWO SMALL 12-VOLT LEAD-ACID BATTERIES FOR THE TEST AND I CHOSE TO USE FOUR DIODES IN A BRIDGE RATHER THAN JUST A SINGLE DIODE :



I CHOSE TO USE TWO BATTERIES AND STAY AWAY FROM ANY FORM OF MAINS INPUT SO THAT IT WOULD BE VERY CLEAR THAT NO CONVENTIONAL FORM OF ADDITIONAL POWER COULD UPSET THE RESULTS.

SO, I USED THE FLEET CIRCUIT POWERED BY ONE BATTERY TO CHARGE THE SECOND BATTERY. THEN I SWAPPED THE BATTERIES OVER AND USED THE SECOND BATTERY TO CHARGE THE FIRST. I DID THIS A COUPLE OF TIMES AND LET THE BATTERIES REST SO AS TO GET A RELIABLE READING FROM THEM. THE RESULT WAS A GENUINE GAIN OF REAL, USABLE POWER IN BOTH BATTERIES, SO I CONSIDERED THAT RESULT TO SHOW THAT FREE-ENERGY IS MOST DEFINITELY A FACT, ESPECIALLY SINCE LEAD-ACID BATTERIES WASTE 50% OF ALL OF THE POWER THAT YOU FEED INTO THEM WHEN CHARGING THEM, SO MY TEST HAD A CIRCUIT PERFORMANCE GREATER THAN COP=2.

THE EFFICIENCY OF THAT TEST WOULD PROBABLY HAVE BEEN VERY MUCH HIGHER IF I HAD CHARGED TWO OR MORE BATTERIES CONNECTED IN SERIES. THE COIL USED WAS WOUND ON A PLASTIC PIPE OFFCUT WHICH WAS TO HAND AT THE TIME. IT WAS 8 INCHES IN DIAMETER (200mm) AND 10mm X 12mm IN CROSS-SECTION AND THE WIRE WAS SINGLE-STRAND 6-AMP CAPACITY EQUIPMENT WIRE WHICH WAS AVAILABLE AT THE TIME.

NOTES : <http://www.free-energy-info.com/FLEET.pdf>

VIDEO : [https://youtu.be/HO2B8\\_rDVjs](https://youtu.be/HO2B8_rDVjs)